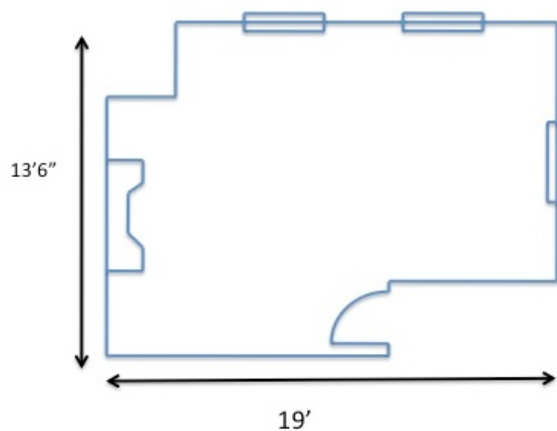


Décor kit

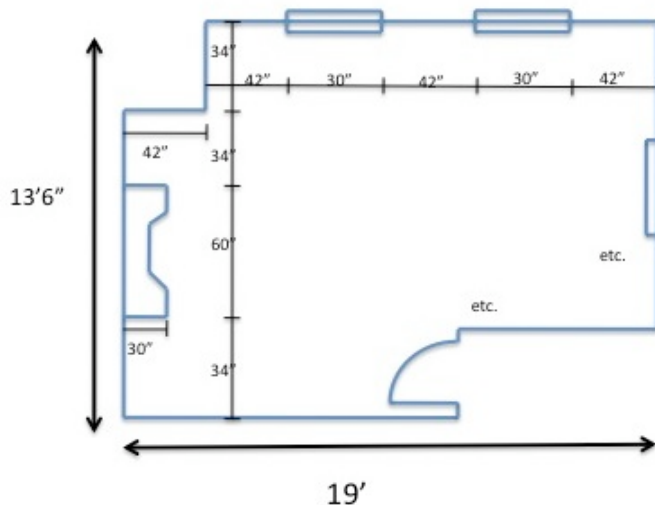
How to Measure (like a pro)

1. Use pencil to sketch the floor plan.

Measure the **length and width** of the room over-all and jot those measurements **outside** the perimeter on the page



Take **detailed measurements** of doors, windows, built-ins, fireplaces, closets, etc. and the spaces between them and record those measurements **inside** the perimeter on the page. Tips: measure to and from the outside edge of window and door casings; when you have finished measuring a wall in detail, make sure the numbers add up; and if there are any electrical outlets in the floor, please draw them in and measure where they are from the wall.



2. Use pencil to sketch important **elevations**.

Sketch any walls that have windows, doors, fireplaces, closets, architectural details like wainscoting, chair rails, moldings, etc. Note height – top and bottom – of these elements. Also sketch in any electrical outlets, sconces, or wall mounted televisions.

